

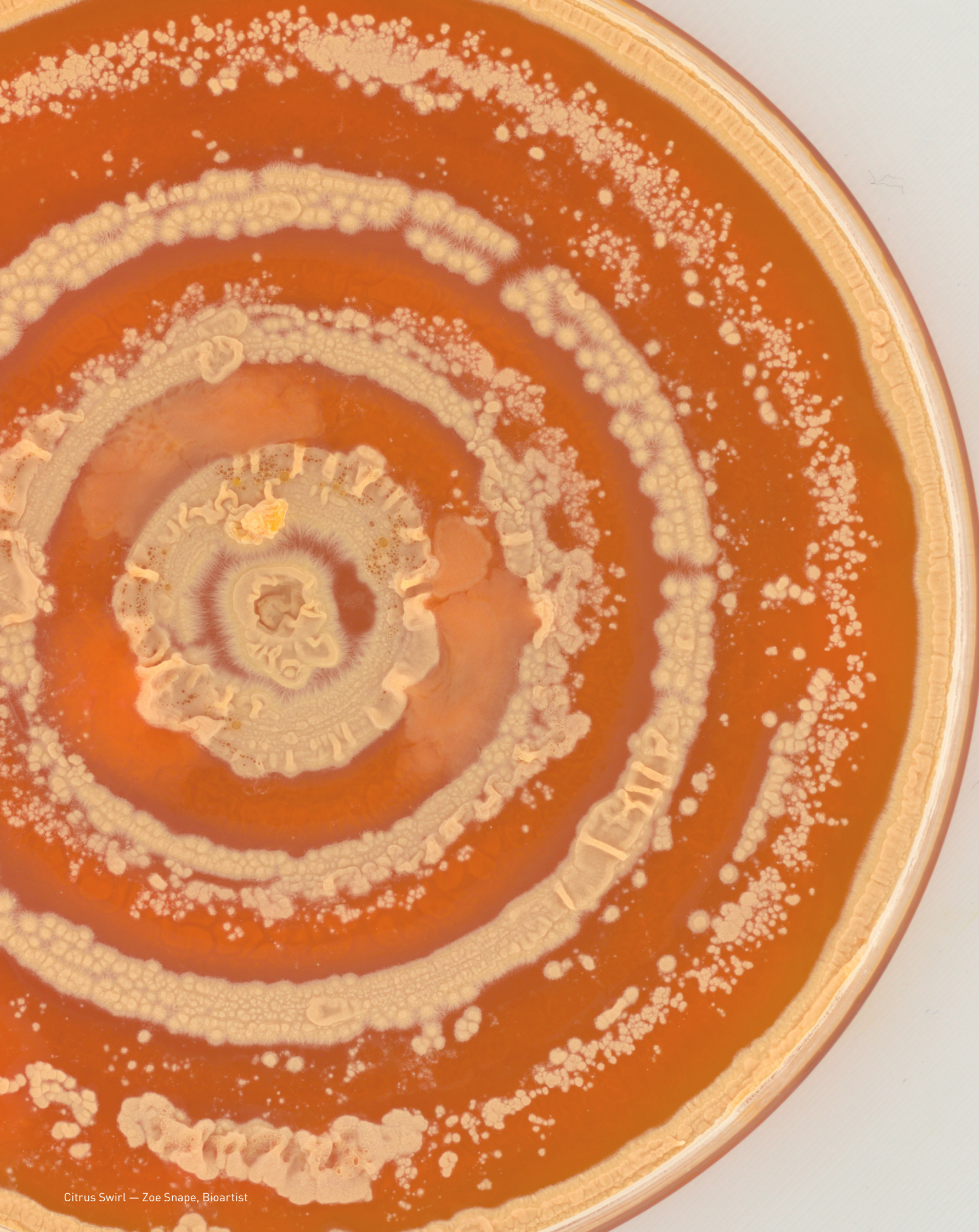


**SINGER
INSTRUMENTS**
A RESPONSIBILITY TO SCIENCE!



ColonyCam
VOGUE

*High resolution photography
of colonies on agar*



I take photos
that make your
microbes pop!

Created to take the perfect image so you don't have to.

What is ColonyCam VOGUE?

A high throughput colony imaging workstation and the answer to your photography woes. Designed from the ground up to take high-resolution, super uniform photos of colonies on agar. Using diffused dark field technology for lighting flatter than the Netherlands and the stunning clarity of a 20 megapixel camera, ColonyCam VOGUE allows you to see your colonies in a whole new light. No more time-wasting to get that perfect angle with your phone.



"A really high-quality camera which helps detect the most subtle of morphological variations."

Catrin Williams, University of Exeter

Why do I need it?

High resolution

Why waste your time analysing low-quality images? ColonyCam VOGUE resolves the smallest of features — even individual hairs and filaments.

Speed

With ColonyCam VOGUE, you can photograph up to 300 plates per hour. Become a camera cowboy and the fastest shooter in the west.

Versatile

ColonyCam VOGUE is compatible with both 90 mm Petri and SBS plates. Capturing scientific excellence even on 6- and 12- well multi-well plates.

Lid-on imaging

Ditch fiddling with lids, save a step and preserve sample integrity.

Integratable

Seamlessly merge ColonyCam VOGUE into your workflow using the API mode. It's even compatible with robotic arms!

Easy to use

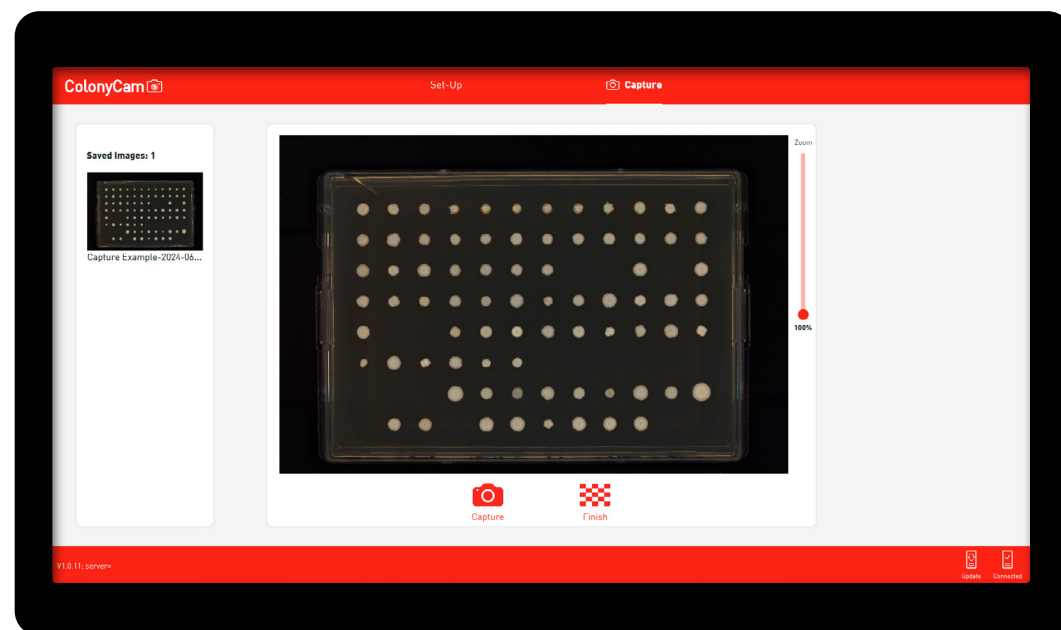
As always, we've designed ColonyCam VOGUE to be as simple as possible. Only 2 buttons and the settings are already optimised for you.

“ColonyCam VOGUE’s resolution is exceptional. This enables sophisticated intra-colony analysis at scale, allowing high-throughput assays that go beyond traditional growth measurements.”

Dr. Peter Thorpe, Queen Mary University of London

Super simple software

You're on the highway to a hell of a lot of pictures. ColonyCam's dedicated software ensures your high-throughput experiments run without a hitch. Organise your experiments with custom labels added automatically at the click of a button. You can even use our compatible barcode scanner for that "Automation Expert" feel.



Seamless image integration for your analytical workflow

Accurate analysis starts with high-quality images, ensuring every detail is captured for reliable, accurate and insightful results. At 36 pixels/mm with lighting flatter than your phone could ever achieve, ColonyCam's images are excellent for plugging into your existing analysis pipeline. No need for any changes: with greater resolution come greater results. ImageJ thresholding has never been this easy.

Take it a step further and use our API mode to create a direct pathway to your analysis or train your own machine learning models for customised analysis for your applications.

Even a child could use ColonyCam!

Singer Instruments has 90 years of experience putting simplicity and usability at the heart of our robots. ColonyCam VOGUE is no different.

- Choose to name each image manually or rattle through your images with an automatic timestamp applied after your prefix.
- Race the software to capture another image before the first is displayed.
- Zoom into your colonies for a mid-experiment inspection.

Zone out as you use ColonyCam VOGUE to speed through 300 plates in 1 hour (depending on your setup).

Rest assured, your experiment is now neatly organised into a collection of high-quality, perfectly labelled photos, ready to WOW your PI.



Applications

Bioprospecting

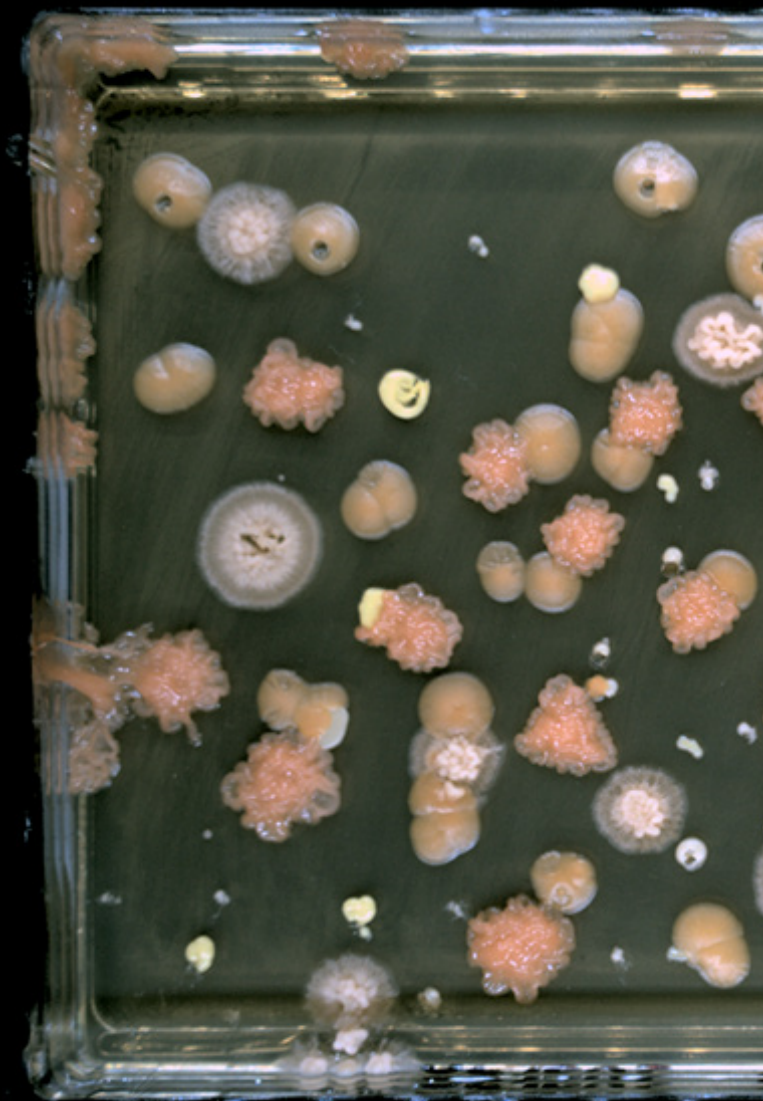
Antimicrobial susceptibility testing
Microbial identification
Unlocking nature's hidden treasures, one plate at a time.

Genomics

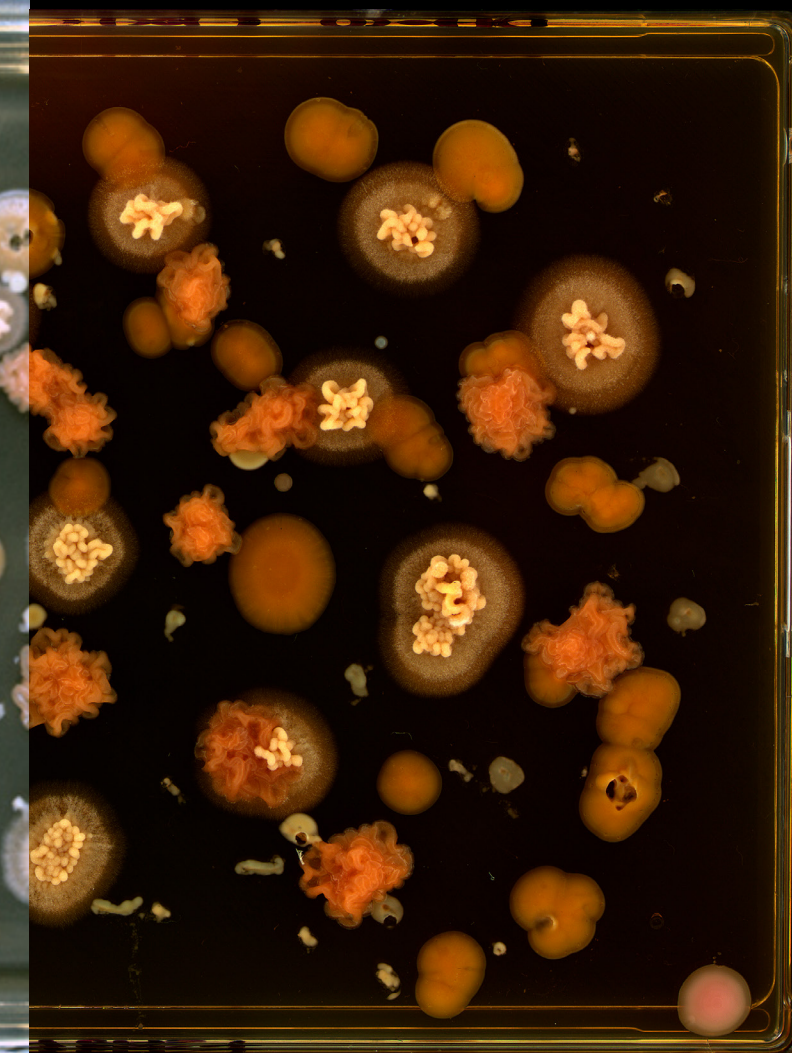
Strain phenotyping
Screening mutant libraries
Human or plant microbiome studies
Microbial ecosystems

Exploring your own thing!

Quality control inspection
Bioart



Before ColonyCam VOGUE

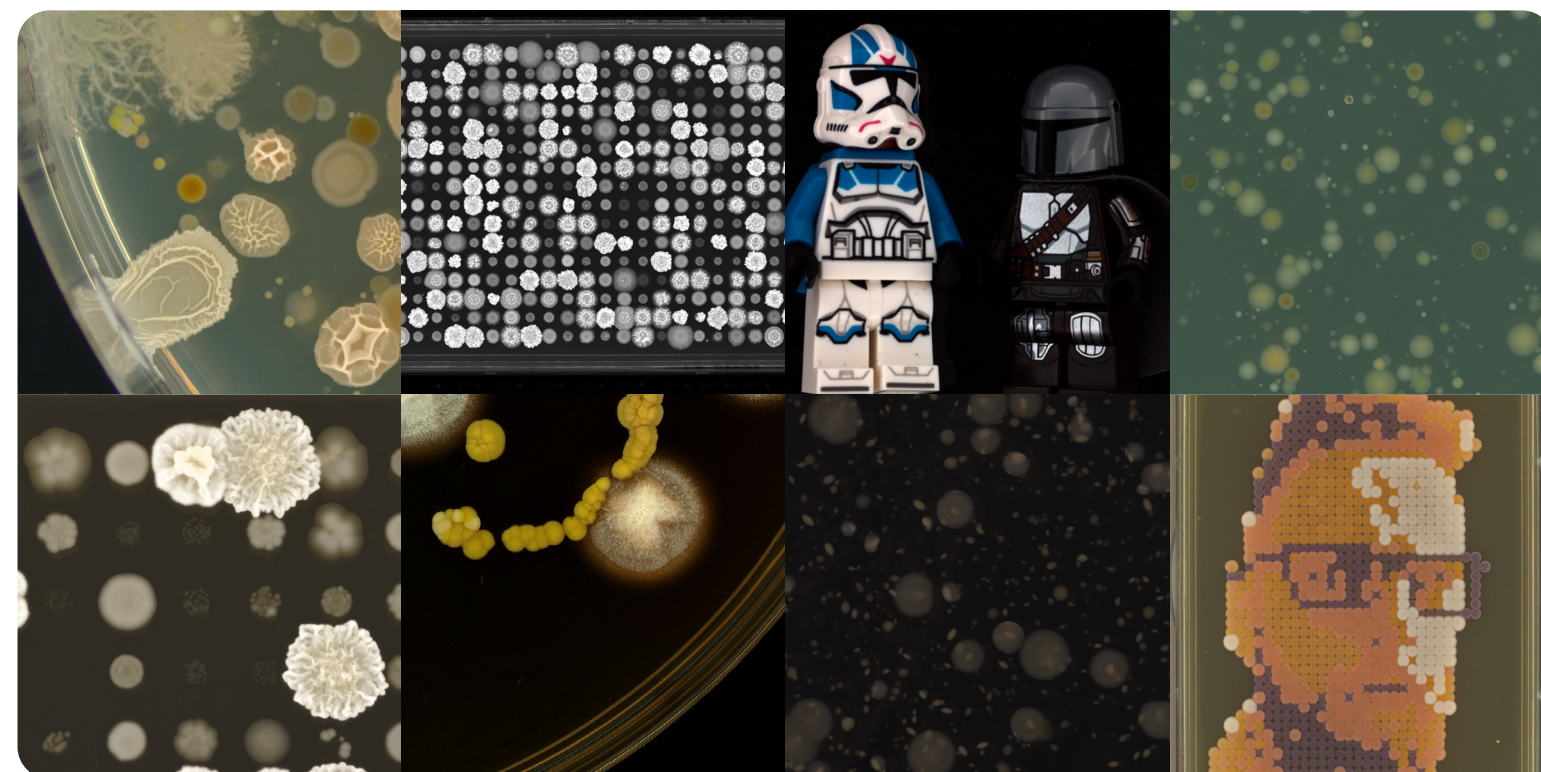


After ColonyCam VOGUE

**Race to be one of the first to get your
ColonyCam VOGUE and shape the
development of our analysis features to
your needs.**

Join our Discovery Community and work with
us on the next analysis package.

Join the Discovery Community



Technical Specifications

Standard hardware set-up

Model

ColonyCam VOGUE

Product Code

IMG-001

Technical Specs

- Length: 400 mm (15.75")
- Width:
 - Drawer closed: 404 mm (15.9")
 - Draw open: 513 mm (20.2")
- Height: 612 mm (24")
- Weight: 22.5 kg

Camera

- 20 megapixel colour camera
- Field of view 150x100 mm
- 36.5 pixels/mm at mid-plate agar depth
- Fixed focus lens at 5 mm agar depth
- Depth of field +/- 5 mm

Power Requirements

- Power: 110-240 V AC 50-60 Hz
- External power supply: 24 V DC

Computer Specs

- OS: Ubuntu 22.04 LTS
- Memory: 16 GB
- Storage: 1 TB
- Processor: Intel Core i7
- Display Resolution: 1920 x 1080

Drawer Movement

- Speed: 240 mm/s
- Acceleration: 240 mm/s²

Lighting

- White light illumination (Top lit)

Connectivity

- 1x USB 3.0
- 2x USB 2.0
- 1x HDMI
- Ethernet

Accessories Included

- 21.5" flat screen Monitor
- Keyboard & Mouse
- 90 mm Petri Adapter

Support

1-Year Lab Support

SLS-002

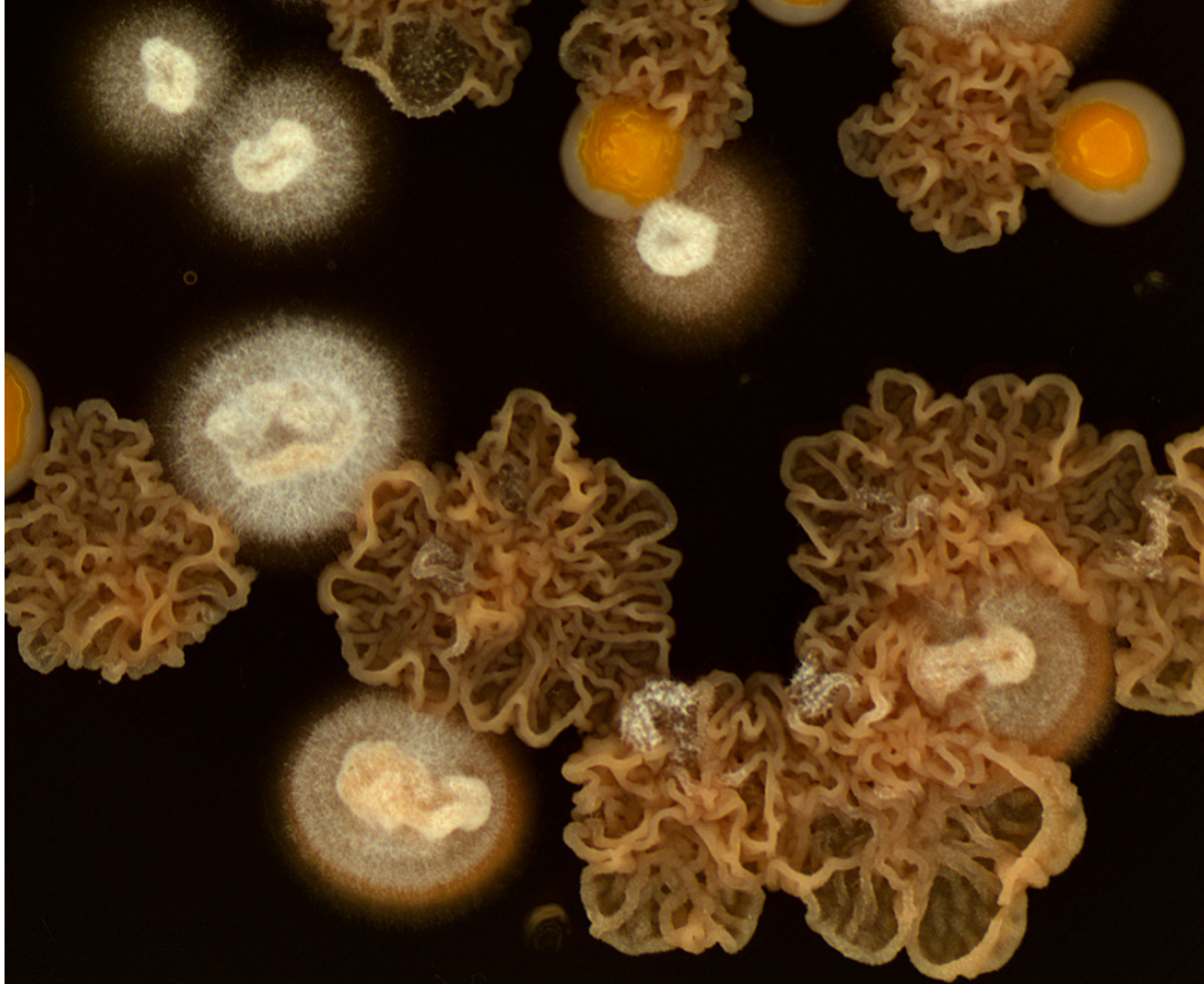
1-Year Lab Support Plus

SLS-003

Step up your imaging game and let the scientific world see your science in all its miniscule glory. Give your microbes the opportunity to go viral!

Experience the ColonyCam revolution first hand. Request a demo, or ask a us question.

Book an online demo





90 years of microbial lab awesomation!

We believe science shouldn't be limited by what's humanly possible. It shouldn't be frustratingly laborious or tedious and boring. From the climate crisis and renewable energy to antimicrobial resistance, cancer cures and unlocking the microbiome, science holds the key to many of the world's greatest challenges.

We hope our robots can get humanity there faster.

From our state-of-the-art facility in beautiful Exmoor National Park in the South West of England, we build and manufacture mechatronic workstations and cutting-edge lab automation robots accelerating science in over 50 countries worldwide. With further offices in California, Singapore and Germany, we're able to serve a truly global community.



NUMBER OF EMPLOYEES
60



HAPPY CUSTOMERS
1700+



COUNTRIES SERVED
60+



YEAR FOUNDED
1934



CUSTOMER SATISFACTION
NPS RATING 76



EMPLOYEE SATISFACTION
eNPS RATING 61



SINGER INSTRUMENTS

A RESPONSIBILITY TO SCIENCE!

UK

Roadwater,
Watchet,
Somerset.
TA23 0RE
UK

+44 1984 640226

USA

Singer Instrument Inc.
611
Gateway Blvd,
Suite 120,
South San Francisco,
CA 94080
USA

Singapore

Centre for life,
Sciences,
#02-14A,
28 Medical Drive,
117456
Singapore

contact@singerinstruments.com
singerinstruments.com

Get a quote

